

# 第50回全日本実業団ボウリング選手権大会



**Oil Pattern Distance:** 45 Feet      **Reverse Brush Drop:** 37 Feet      **Oil Per Board:** 45 uL  
**Forward Oil Total:** 17.19 mL      **Reverse Oil Total:** 10.71 mL      **Volume Oil Total:** 27.9 mL  
**Forward Boards Crossed:** 382 Boards      **Reverse Boards Crossed:** 238 Boards      **Total Boards Crossed:** 620 Boards

	Start	Stop	Loads	Speed	Crossed	Start	End	Feet	T.Oil
1	3L	3R	1	10	35	0.0	0.0	0.0	1575
2	5L	5R	2	10	62	0.0	2.8	2.8	2790
3	7L	7R	2	10	54	2.8	5.6	2.8	2430
4	10L	10R	3	10	63	5.6	9.8	4.2	2835
5	11L	11R	3	14	57	9.8	15.7	5.9	2565
6	12L	12R	3	14	51	15.7	21.6	5.9	2295
7	13L	13R	4	18	60	21.6	31.8	10.2	2700
8	13L	13R	0	22	0	31.8	39.0	7.2	0
9	13L	13R	0	30	0	39.0	45.0	6.0	0

Navigation: Forward Reverse More

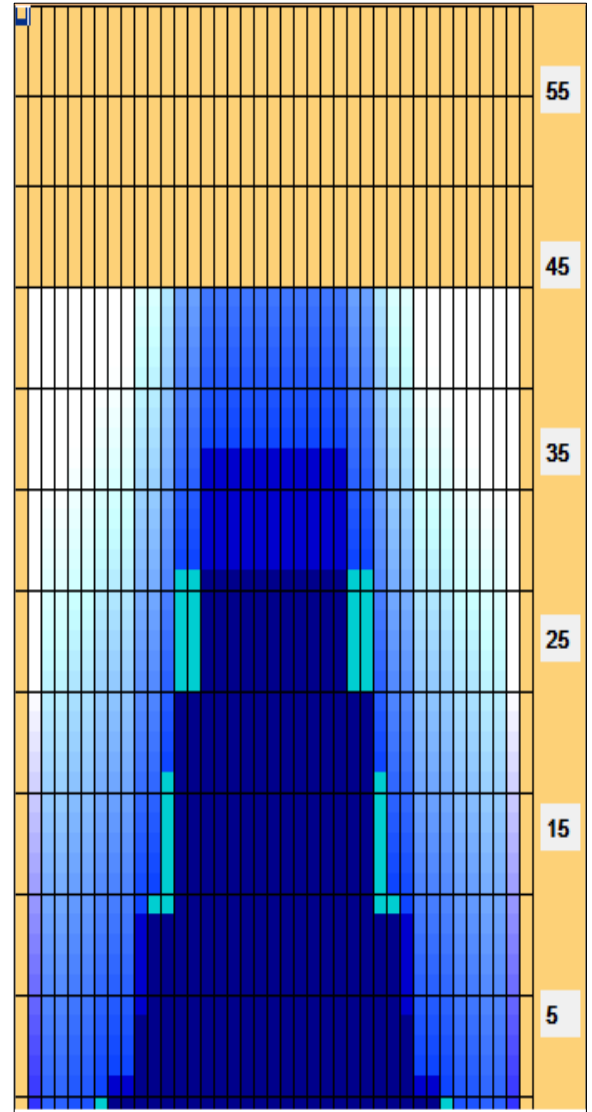
	Start	Stop	Loads	Speed	Crossed	Start	End	Feet	T.Oil
1	2L	2R	0	30	0	45.0	37.0	-8.0	0
2	15L	15R	4	22	44	37.0	24.6	-12.4	1980
3	13L	13R	4	18	60	24.6	14.4	-10.2	2700
4	10L	10R	4	14	84	14.4	6.5	-7.9	3780
5	8L	8R	2	10	50	6.5	3.7	-2.8	2250
6	7L	7R	0	10	0	3.7	0.0	-3.7	0

Navigation: Forward Reverse More

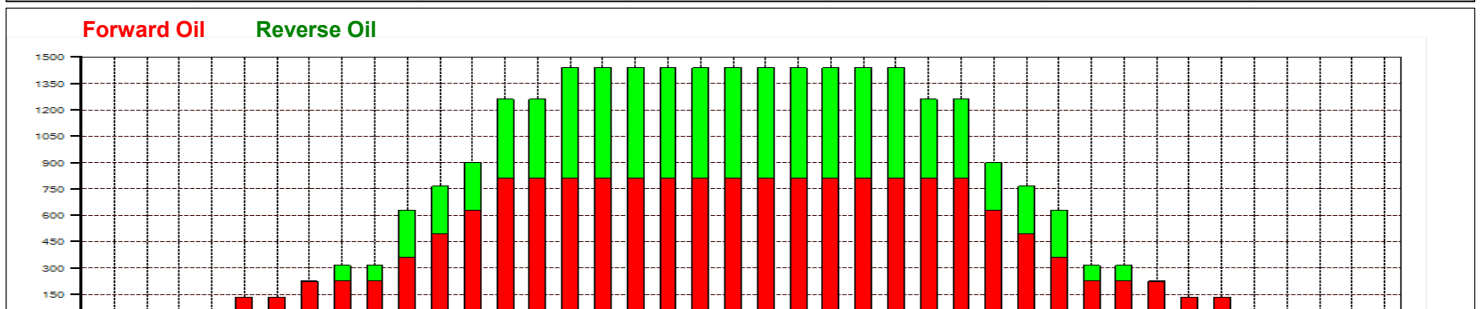
Conditioner:  
Type In or Select One

TransferType:  
Type In or Select One

- Forward
- Reverse
- Combined
- Buff



Item	3L-7L:18L-18R	8L-12L:18L-18R	13L-17L:18L-18R	18L-18R:17R-13R	18L-18R:12R-8R	18L-18R:7R-3R
Description	Outside Track:Middle	Middle Track:Middle	Inside Track:Middle	Middle:Inside Track	Middle:Middle Track	Middle:Outside Track
Track Zone Ratio	12.31	2.46	1.05	1.05	2.46	12.31



# 第50回全日本実業団ボウリング選手権大会



---

<b>Oil Pattern Distance:</b>	<b>45 Feet</b>	<b>Reverse Brush Drop:</b>	<b>37 Feet</b>	<b>Oil Per Board:</b>	<b>45 uL</b>
<b>Forward Oil Total:</b>	<b>17.19 mL</b>	<b>Reverse Oil Total:</b>	<b>10.71 mL</b>	<b>Volume Oil Total:</b>	<b>27.9 mL</b>
<b>Forward Boards Crossed:</b>	<b>382 Boards</b>	<b>Reverse Boards Crossed:</b>	<b>238 Boards</b>	<b>Total Boards Crossed:</b>	<b>620 Boards</b>

---