

# 第43回全日本実業団産業別選手権大会 決勝



Oil Pattern Distance:	42 Feet	Reverse Brush Drop:	42 Feet	Oil Per Board:	50 uL
Forward Oil Total:	15.3 mL	Reverse Oil Total:	13.65 mL	Volume Oil Total:	28.95 mL
Forward Boards Crossed:	306 Boards	Reverse Boards Crossed:	273 Boards	Total Boards Crossed:	579 Boards

	Start	Stop	Loads	Speed	Crossed	Start	End	Feet	T.Oil
1	2L	2R	2	14	74	0.0	1.9	1.9	3700
2	4L	4R	1	14	33	1.9	3.8	1.9	1650
3	6L	6R	2	18	58	3.8	8.9	5.1	2900
4	7L	7R	1	18	27	8.9	11.4	2.5	1350
5	10L	10R	2	18	42	11.4	16.5	5.1	2100
6	11L	11R	2	22	38	16.5	22.7	6.2	1900
7	12L	12R	2	22	34	22.7	28.9	6.2	1700
8	2L	2R	0	22	0	28.9	35.0	6.1	0
9	2L	2R	0	26	0	35.0	42.0	7.0	0

Conditioner:  
Type In or Select One

TransferType:  
Type In or Select One

Forward



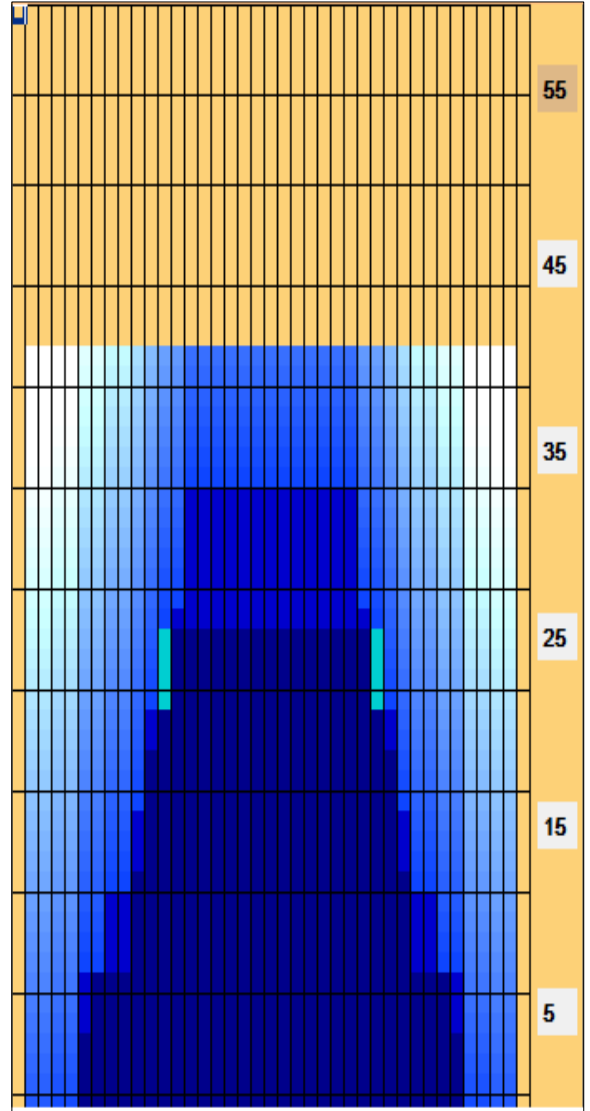
Reverse



Combined



Buff



	Start	Stop	Loads	Speed	Crossed	Start	End	Feet	T.Oil
1	2L	2R	0	30	0	42.0	35.0	-7.0	0
2	14L	14R	2	22	26	35.0	28.8	-6.2	1300
3	13L	13R	2	18	30	28.8	23.7	-5.1	1500
4	11L	11R	2	18	38	23.7	18.6	-5.1	1900
5	10L	10R	2	14	42	18.6	14.7	-3.9	2100
6	8L	8R	2	14	50	14.7	10.8	-3.9	2500
7	6L	6R	3	10	87	10.8	6.6	-4.2	4350
8	2L	2R	0	10	0	6.6	0.0	-6.6	0

Item	3L-7L:18L-18R	8L-12L:18L-18R	13L-17L:18L-18R	18L-18R:17R-13R	18L-18R:12R-8R	18L-18R:7R-3R
Description	Outside Track:Middle	Middle Track:Middle	Inside Track:Middle	Middle: Inside Track	Middle:Middle Track	Middle:Outside Track
Track Zone Ratio	5	1.62	1.02	1.02	1.62	5

